

Supporting Information

Correlating Cellulose Nanocrystal Particle Size and Surface Area

Andreas Brinkmann,^{a*} Maohui Chen,^a Martin Couillard,^b Zygmunt J. Jakubek,^a Tianyang Leng,^{a,c} Linda J. Johnston^{a,c*}

^aMeasurement Science and Standards and ^bEnergy, Mining and Environment, National Research Council Canada, Ottawa, ON K1A 0R6 Canada

^cDepartment of Chemistry, University of Ottawa, Ottawa, ON Canada

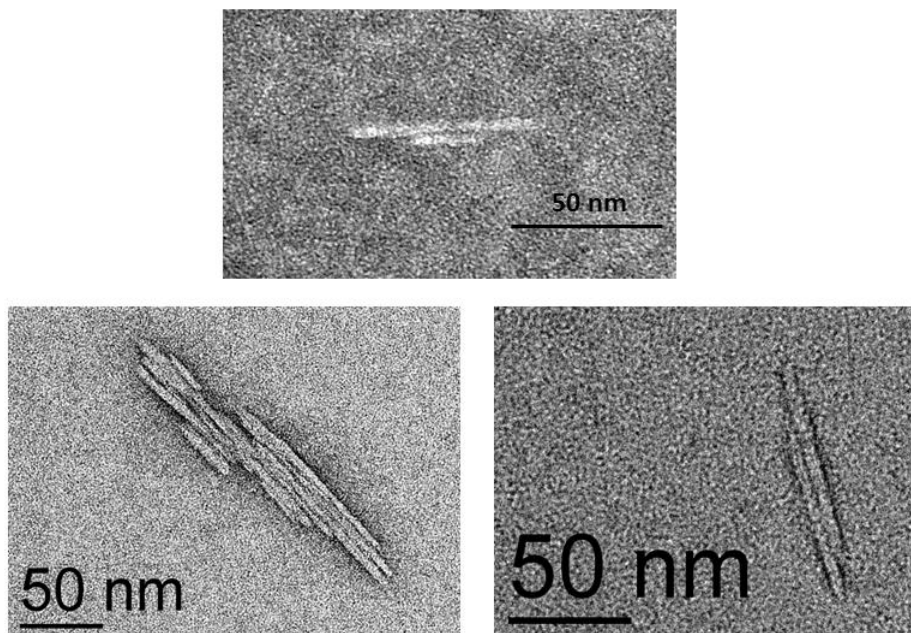


Figure S1. TEM images of CNCs-1, illustrating particle aggregation.

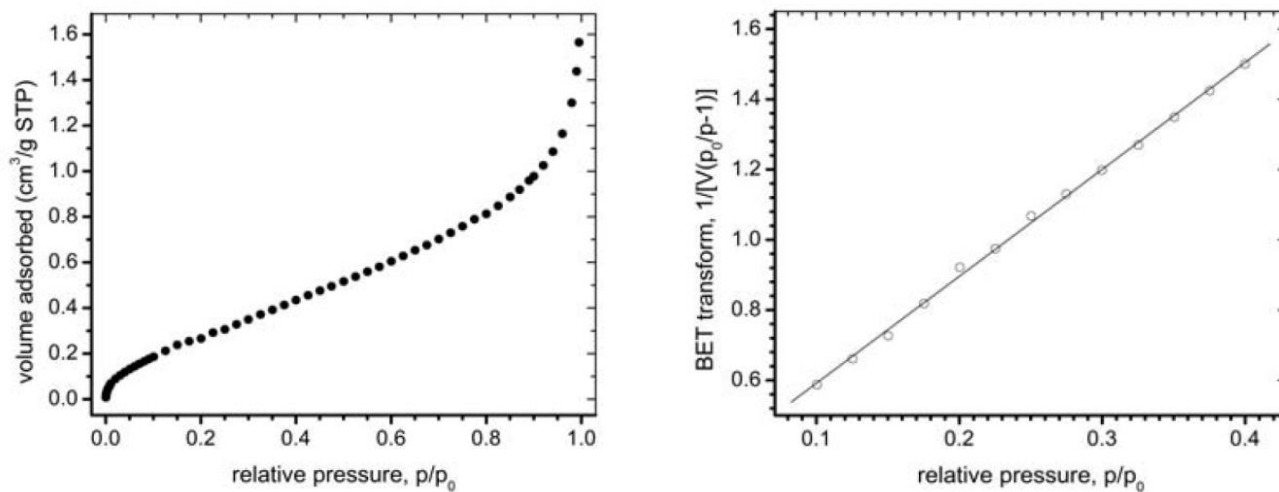


Figure S2: Typical BET data for characterization of CNC-1: left - volume adsorbed as a function of relative pressure; right - BET transform of the isotherm plotted as a function of relative pressure over the region 0.1- 0.4; solid line indicates the best fit.